

Iteaduino 2.0



Overview

Iteaduino is an Arduino compatible board. It's designed based on Duemilanove scheme, 100% compatible to its existing program, shield and IDE. On the hardware part, remarkable changes are taken to improve the flexibility and user experience.

Basic features

- Inherits all of Arduino Duemilanove's features.
- Compatible with Arduino UNO/Duemilanove pins, holes and dimensions.
- 3.3V/5V Operating Voltage selection
- More visible location of Indicator LEDs
- Wide range external input from 7~23V DC
- All pins out for Sensor and Servo
- UART/IIC interface breakout

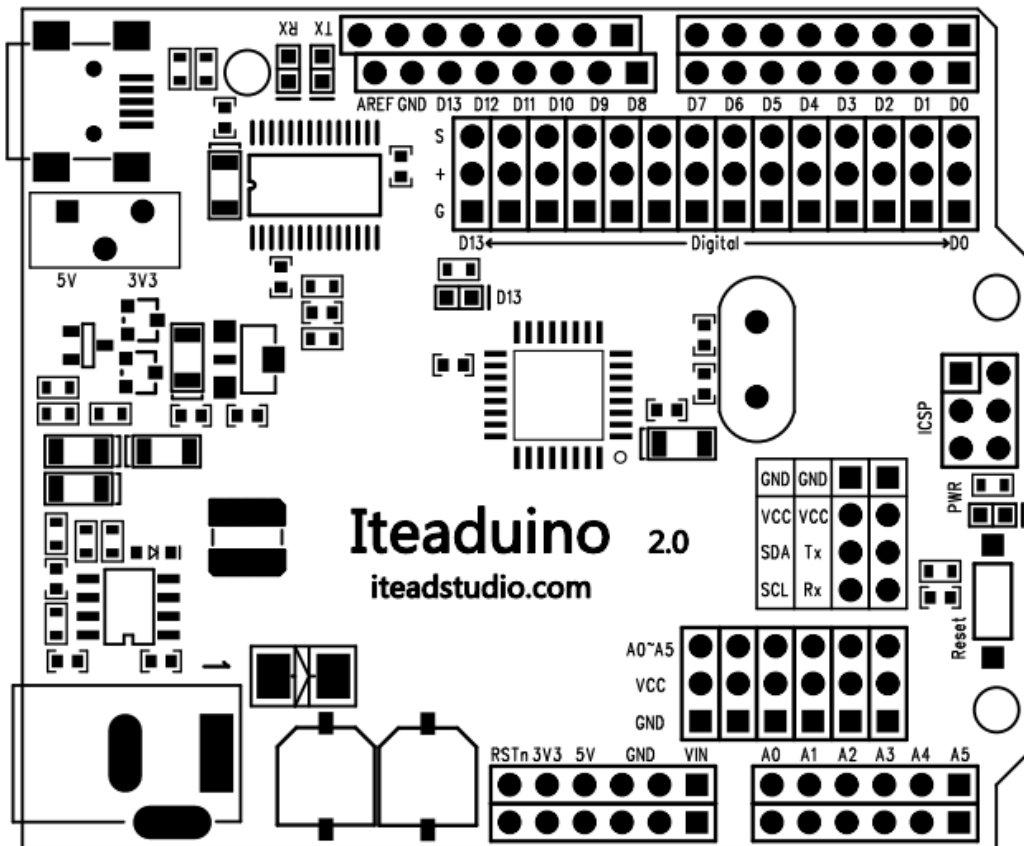
Specifications

Microprocessor	ATmega328P
PCB size	10mm X 82mm X 1.6mm
Indicators	Power,TX,RX,D13
Power supply(recommended)	7-23V DC
Power supply(limits)	23 VDC (max)
Communication Protocol	UART,SPI,IIC
Clock Speed	16MHz
RoHS	Yes

Electrical Characteristics

Specification	Min	Type	Max	Unit
Input voltage	7	-	23	VDC
Operating Voltage	-	3.3/5	-	VDC
DC Current per I/O Pin	-	40	-	mA

Hardware



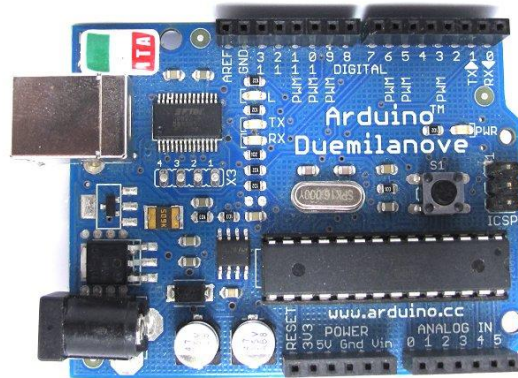
Digital/Servo Interface: D0~D13 pin

Sensor Interface: A0 A1 A2 A3 A4 A5 pin

More about Arduino/Iteadino

- <http://arduino.cc/en/Tutorial/HomePage> : try these example programs.
- <http://arduino.cc/en/Reference/HomePage> : read the reference for the Arduino language.

What are the changes from Arduino to Iteaduino 2.0



1. Auto USB/ External power switch
2. 3.3V Operating Voltage selection
3. Easier access to reset button
4. More visible location for LEDs
5. Sensor and Servo/Digital interface break out
6. Re-route PCB for analog/digital part
7. Mini USB socket for fixing more shield
8. Wide range external input from 7-23V

License



Attribution Non-Commercial Share Alike

cc by-nc-sa

Links and References

- Itead Studio Site: iteadstudio.com
- Arduino site: arduino.cc
- Getting started with Arduino: arduino.cc/en/Guide/Windows

Revision History

Rev.	Description	Release date
v1.0	Initial version	2011-8-8